

# GLOUCESTER COUNTY SURVEY MARK DATA SHEET

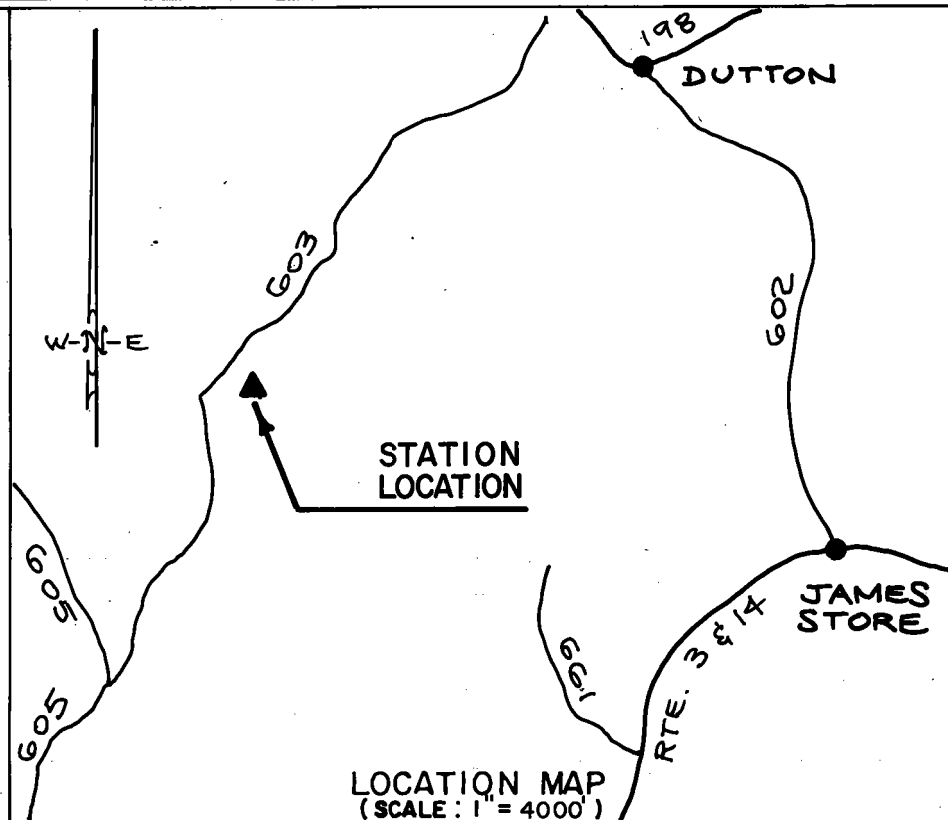
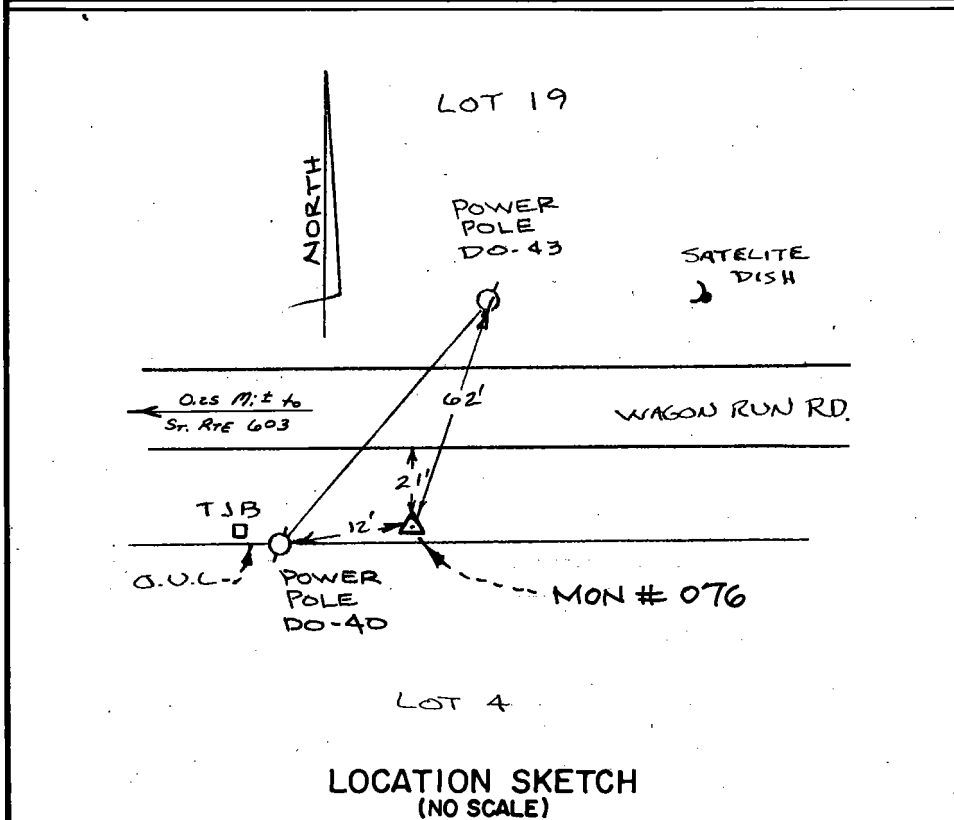
**STATION NO.**  
076

HORIZONTAL DATA :		
VA. STATE PLANE COORD. - SOUTH ZONE (NAD 1983)		
UNITS	EASTING (X)	NORTHING (Y)
METERS	3677438.480	1128901.398
U.S. SURVEY FT.	12065062.746	3703737.337
LATITUDE (DMS)		37 28 40.35132
LONGITUDE (DMS)		76 29 37.28340
SCALE FACTOR		0.99994725
CONVERGENCE $\sphericalangle$ (DMS)		1 13 3.65
VERTICAL DATA :		
REF. TO NATL. GEOD. VERT. DATUM (1988)		
UNITS	STATION ELEVATION	
METERS	24.99	
U.S. SURVEY FT.	81.98	

**STATION DESCRIPTION :**

**DISTRICT :** WARE

A 3-1/4" ALUMINUM DISK MONUMENT SET APPROXIMATELY FLUSH WITH THE GROUND STAMPED STATION NO. 076. TO REACH: FROM THE INTERSECTION OF STATE ROUTE 3 & 14 AND STATE ROUTE 604 AT WAN, GO ABOUT 1.0 MILE NORTH ON STATE ROUTE 604 TO INTERSECTION WITH STATE ROUTE 605; GO ABOUT 1.77 MILES NORTH ON STATE ROUTE 605 TO INTERSECTION WITH STATE ROUTE 603; GO ABOUT 1.55 MILES NORTHEAST ON STATE ROUTE 603 TO INTERSECTION WITH "WAGON RUN ROAD," (PRIVATE LANE); GO ABOUT 0.25 MILE EAST ON "WAGON RUN ROAD" TO MONUMENT SITE ON THE SOUTH SIDE OF ROAD.



DATE: JANUARY, 1992

NOTE: USERS OF MONUMENTS LOCATED ON PRIVATE PROPERTY  
MUST OBTAIN LAND OWNERS PERMISSION BEFORE ENTERING



**DAWSON & PHILLIPS, P.C.**  
CERTIFIED LAND SURVEYORS  
(804) 693-2993