

# GLOUCESTER COUNTY SURVEY MARK DATA SHEET

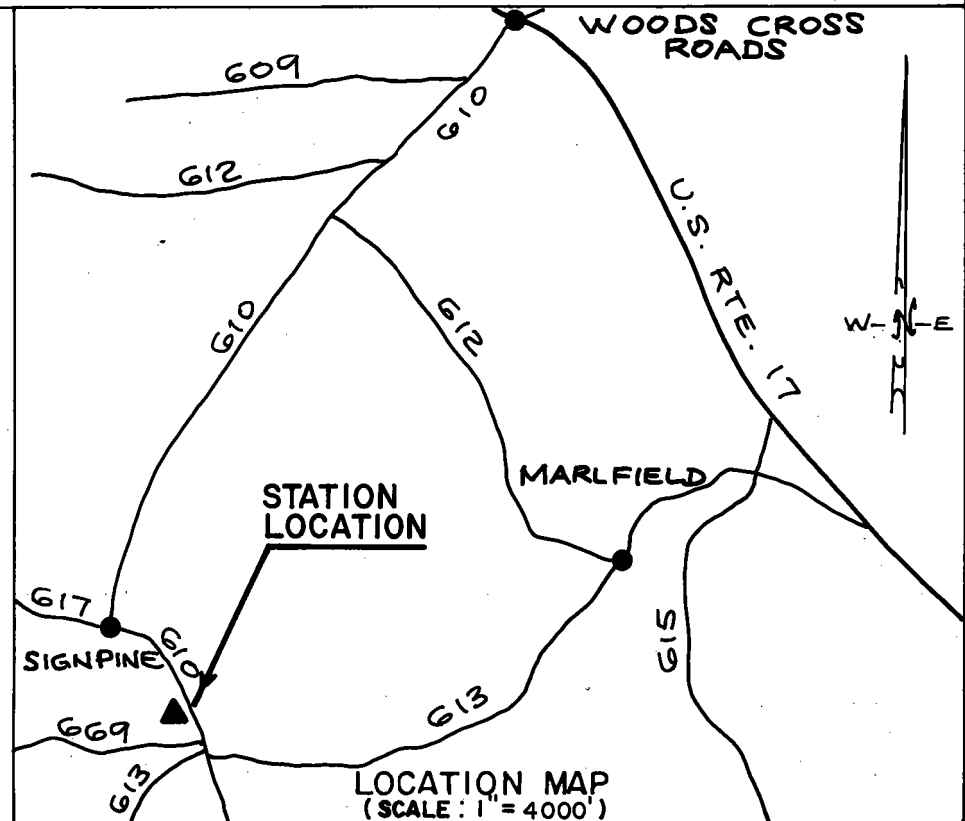
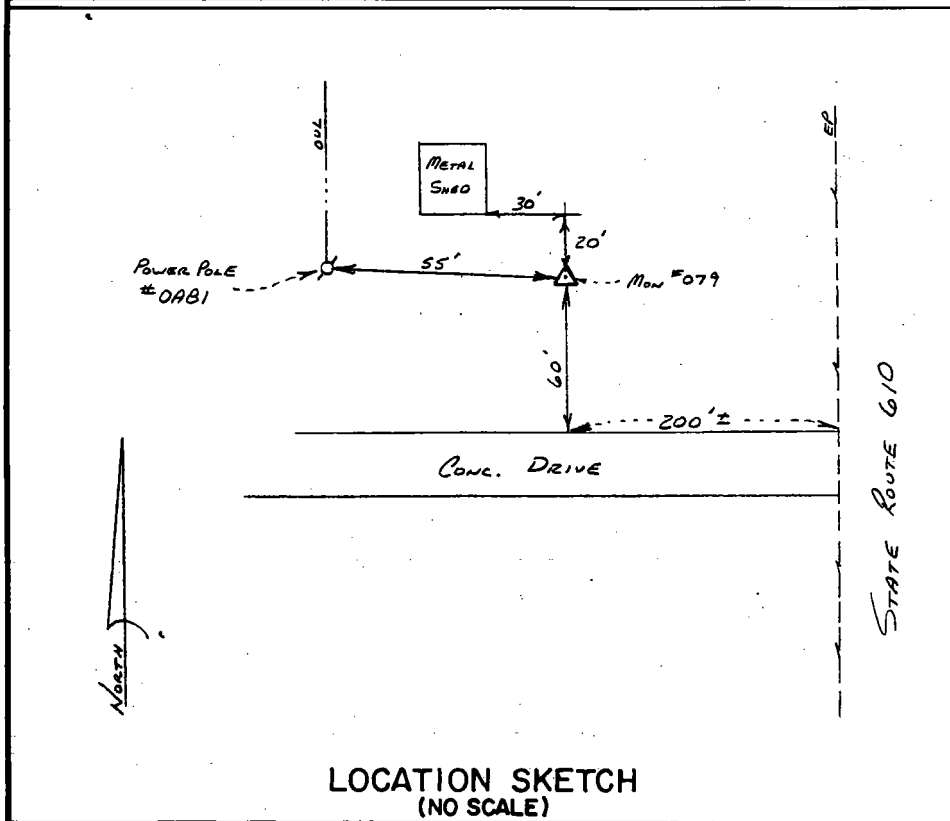
**STATION NO.**  
079

HORIZONTAL DATA :		
VA. STATE PLANE COORD. - SOUTH ZONE (NAD 1983)		
UNITS	EASTING (X)	NORTHING (Y)
METERS	3664505.836	1124246.497
U.S. SURVEY FT.	12022632.897	3688465.382
LATITUDE (DMS)		37 26 17.97432
LONGITUDE (DMS)		76 38 27.30214
SCALE FACTOR		0.99994616
CONVERGENCE $\sphericalangle$ (DMS)		1 7 41.96
VERTICAL DATA :		
REF. TO NATL. GEOD. VERT. DATUM (1988)		
UNITS	STATION ELEVATION	
METERS	23.51	
U.S. SURVEY FT.	77.14	

**STATION DESCRIPTION :**

**DISTRICT :** PETSORTH

A 3-1/4" ALUMINUM DISK MONUMENT SET APPROXIMATELY FLUSH WITH THE GROUND STAMPED STATION NO. 079. TO REACH: FROM THE INTERSECTION OF U. S. ROUTE 17 AND STATE ROUTE 613, GO ABOUT 3.2 MILES WEST ON STATE ROUTE 613 TO INTERSECTION OF STATE ROUTE 613 AND STATE ROUTE 610; GO ABOUT 0.15 MILE NORTH ON STATE ROUTE 610 TO A CONCRETE DRIVE ON THE LEFT AND MONUMENT SITE.



DATE: JANUARY, 1992

NOTE: USERS OF MONUMENTS LOCATED ON PRIVATE PROPERTY  
MUST OBTAIN LAND OWNERS PERMISSION BEFORE ENTERING



**DAWSON & PHILLIPS, P.C.**  
CERTIFIED LAND SURVEYORS  
(804) 693-2993