

GLOUCESTER COUNTY SURVEY MARK DATA SHEET

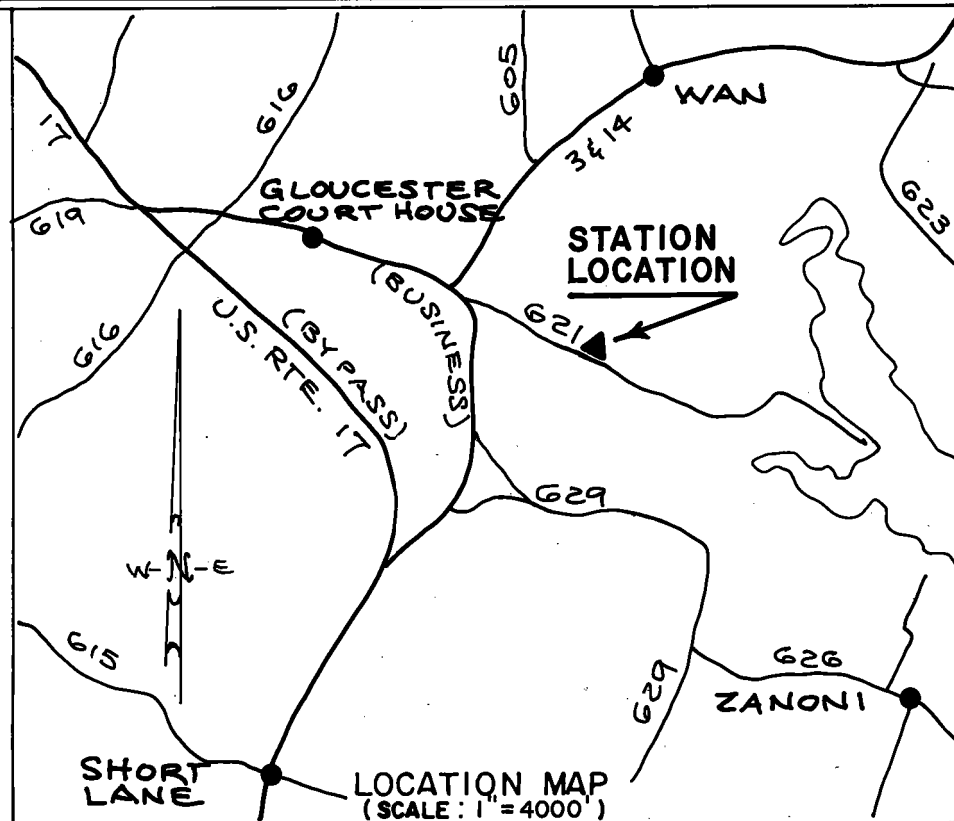
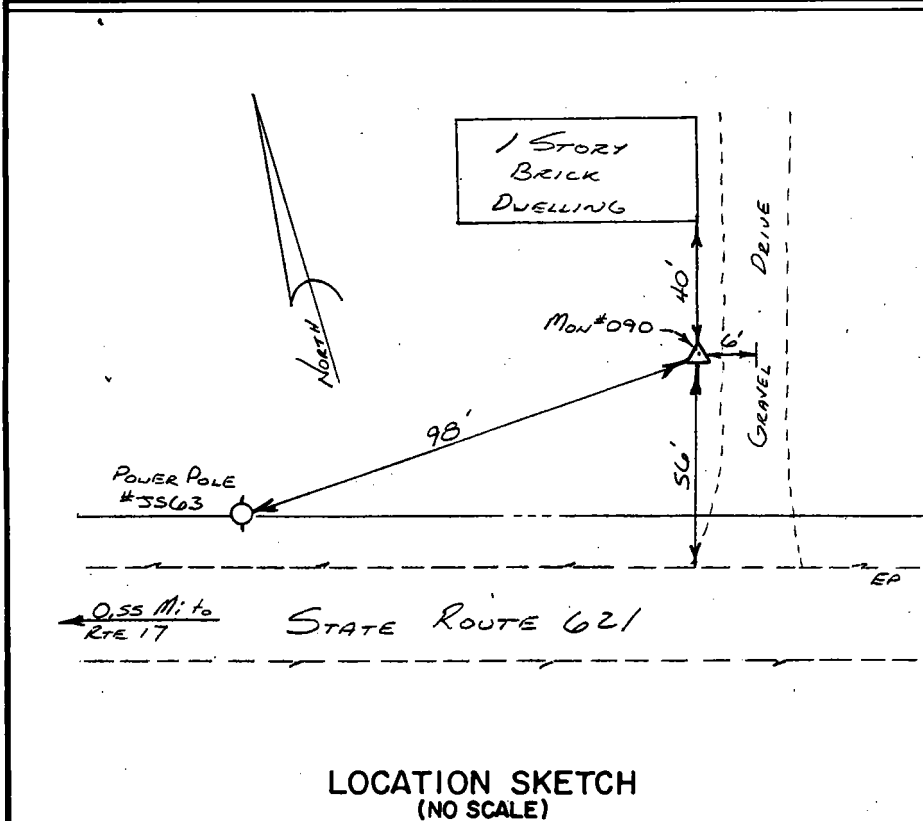
STATION NO.
090

HORIZONTAL DATA :		
VA. STATE PLANE COORD. - SOUTH ZONE (NAD 1983)		
UNITS	EASTING (X)	NORTHING (Y)
METERS	3676219.248	1121195.401
U.S. SURVEY FT.	12061062.649	3678455.245
LATITUDE (DMS)		37 24 31.27527
LONGITUDE (DMS)		76 30 33.51154
SCALE FACTOR		0.99994566
CONVERGENCE \sphericalangle (DMS)		1 12 29.52
VERTICAL DATA :		
REF. TO NATL. GEOD. VERT. DATUM (1988)		
UNITS	STATION ELEVATION	
METERS	18.66	
U.S. SURVEY FT.	61.23	

STATION DESCRIPTION :

DISTRICT : WARE

A 3-1/4" ALUMINUM DISK MONUMENT SET APPROXIMATELY FLUSH WITH THE GROUND STAMPED STATION NO. 090. TO REACH: FROM THE INTERSECTION OF U. S. ROUTE 17 (BUSINESS) AND STATE ROUTE 621; GO ABOUT 0.55 MILE EAST ON STATE ROUTE 621 TO MONUMENT SITE.



DATE: JANUARY, 1992

NOTE: USERS OF MONUMENTS LOCATED ON PRIVATE PROPERTY
MUST OBTAIN LAND OWNERS PERMISSION BEFORE ENTERING



DAWSON & PHILLIPS, P.C.
CERTIFIED LAND SURVEYORS
(804) 693-2993