

# GLOUCESTER COUNTY SURVEY MARK DATA SHEET

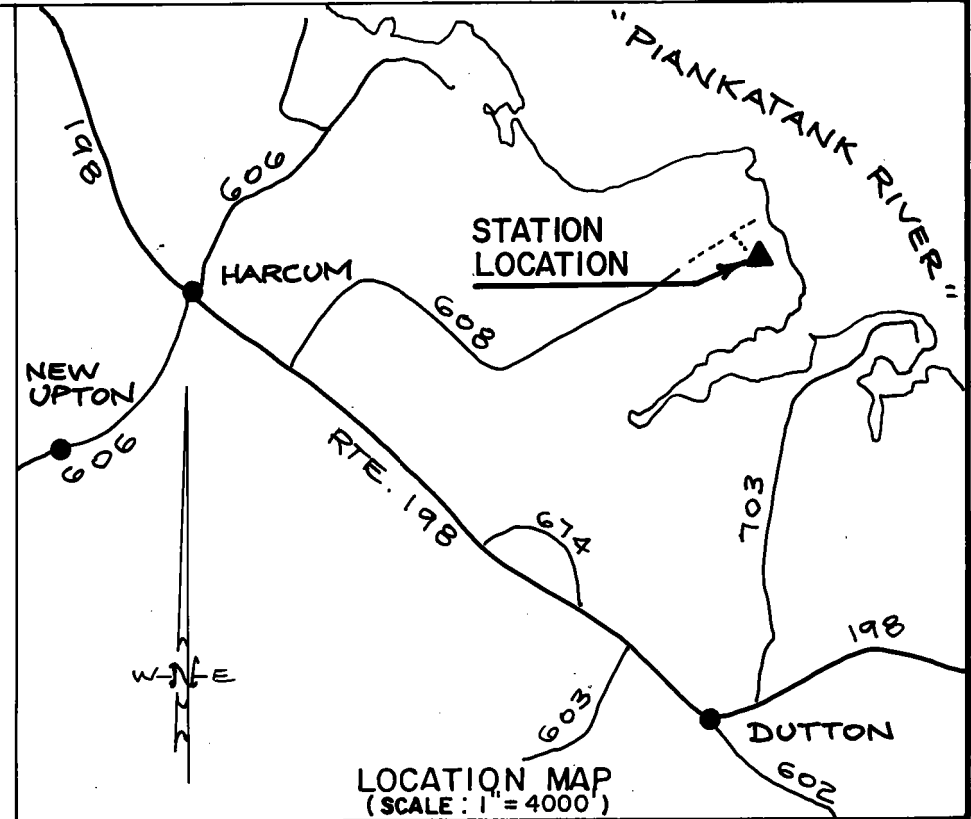
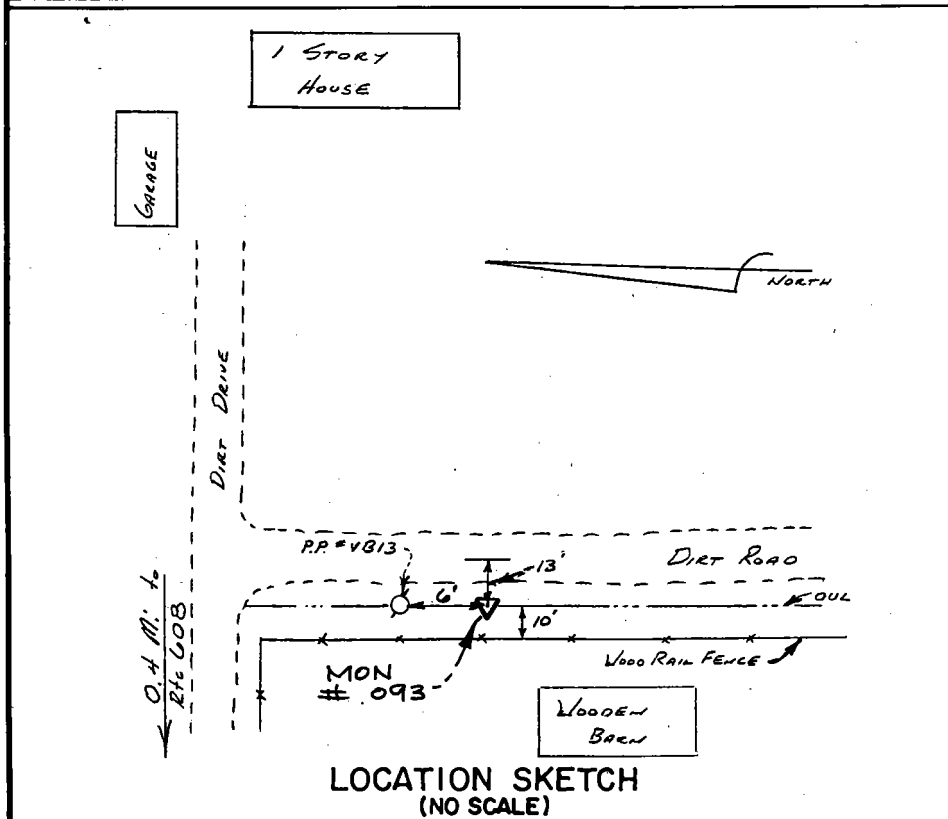
**STATION NO.**  
093

<b>HORIZONTAL DATA :</b>		
VA. STATE PLANE COORD. - SOUTH ZONE (NAD 1983)		
UNITS	EASTING (X)	NORTHING (Y)
METERS	3680027.747	1133806.359
U.S. SURVEY FT.	12073557.700	3719829.696
LATITUDE (DMS)		37 31 17.62306
LONGITUDE (DMS)		76 27 47.61151
SCALE FACTOR		0.99994900
CONVERGENCE $\sphericalangle$ (DMS)		1 14 10.21
<b>VERTICAL DATA :</b>		
REF. TO NATL. GEOD. VERT. DATUM (1988)		
UNITS	STATION ELEVATION	
METERS	2.65	
U.S. SURVEY FT.	8.70	

**STATION DESCRIPTION :**

**DISTRICT :** PETSWORTH

A 3-1/4" ALUMINUM DISK MONUMENT SET APPROXIMATELY FLUSH WITH THE GROUND STAMPED STATION NO. 093. TO REACH: FROM THE INTERSECTION OF STATE ROUTE 198 AND STATE ROUTE 606 AT HARCUM, GO ABOUT 0.44 MILE SOUTHEAST ON STATE ROUTE 198 TO INTERSECTION WITH STATE ROUTE 608; GO ABOUT 1.96 MILES NORTHEAST ON STATE ROUTE 608 TO END OF STATE MAINTENANCE; CONTINUE ABOUT 0.4 MILE ON DIRT LANE TO MONUMENT SITE ON SOUTHWEST SIDE OF DIRT LANE.



DATE: JANUARY, 1992

NOTE: USERS OF MONUMENTS LOCATED ON PRIVATE PROPERTY  
MUST OBTAIN LAND OWNERS PERMISSION BEFORE ENTERING



**DAWSON & PHILLIPS, P.C.**  
CERTIFIED LAND SURVEYORS  
(804) 693-2993