

GLOUCESTER COUNTY SURVEY MARK DATA SHEET

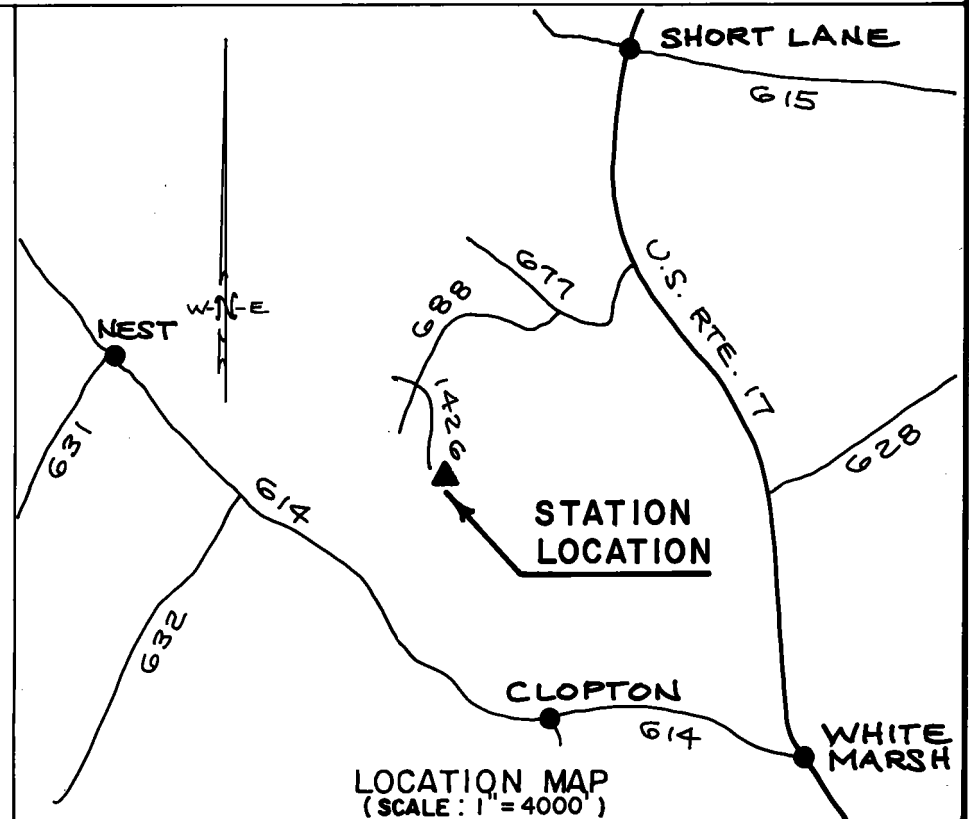
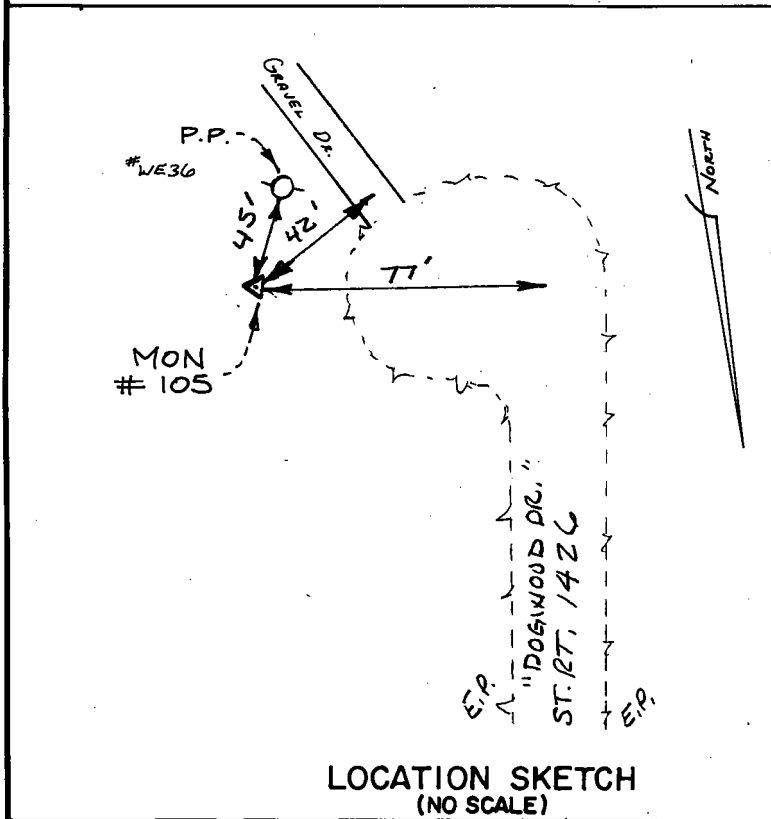
STATION NO.
105

HORIZONTAL DATA : VA. STATE PLANE COORD. - SOUTH ZONE (NAD 1983)		
UNITS	EASTING (X)	NORTHING (Y)
METERS	3672888.572	1115789.659
U.S. SURVEY FT.	12050135.257	3660719.906
LATITUDE (DMS)		37 21 38.21455
LONGITUDE (DMS)		76 32 53.46920
SCALE FACTOR		0.99994541
CONVERGENCE \sphericalangle (DMS)		1 11 4.58
VERTICAL DATA : REF. TO NATL. GEOD. VERT. DATUM (1988)		
UNITS	STATION ELEVATION	
METERS	19.56	
U.S. SURVEY FT.	64.18	

STATION DESCRIPTION :

DISTRICT : PETSWORTH

A 3-1/4" ALUMINUM DISK MONUMENT SET APPROXIMATELY FLUSH WITH THE GROUND STAMPED STATION NO. 105. TO REACH: FROM THE INTERSECTION OF U. S. ROUTE 17 AND STATE ROUTE 615 AT SHORT LANE, GO ABOUT 0.84 MILE SOUTH U. S. ROUTE 17 TO INTERSECTION WITH STATE ROUTE 677; GO ABOUT 0.4 MILE WEST ON STATE ROUTE 677 TO INTERSECTION WITH STATE ROUTE 688; GO ABOUT 0.4 MILE WEST ON STATE ROUTE 688 TO INTERSECTION WITH STATE ROUTE 1425; GO ABOUT 0.45 MILE SOUTHWEST ON STATE ROUTE 1425 TO INTERSECTION WITH STATE ROUTE 1426; GO ABOUT 0.2 MILE SOUTHEAST ON STATE ROUTE 1426 TO MONUMENT SITE AT END OF ROAD.



DATE: JANUARY, 1992

NOTE: USERS OF MONUMENTS LOCATED ON PRIVATE PROPERTY
MUST OBTAIN LAND OWNERS PERMISSION BEFORE ENTERING



DAWSON & PHILLIPS, D.C.
CERTIFIED LAND SURVEYORS
(804) 693-2993