

GLOUCESTER COUNTY SURVEY MARK DATA SHEET

STATION NO.

117

HORIZONTAL DATA :

VA. STATE PLANE COORD. - SOUTH ZONE (NAD 1983)

UNITS	EASTING (X)	NORTHING (Y)
METERS	3681574.733	1132148.205
U.S. SURVEY FT.	12078633.103	3714389.569
LATITUDE (DMS)	37 30 22.76170	
LONGITUDE (DMS)	76 26 46.09287	
SCALE FACTOR	0.99994833	
CONVERGENCE \sphericalangle (DMS)	1 14 47.55	

STATION DESCRIPTION :

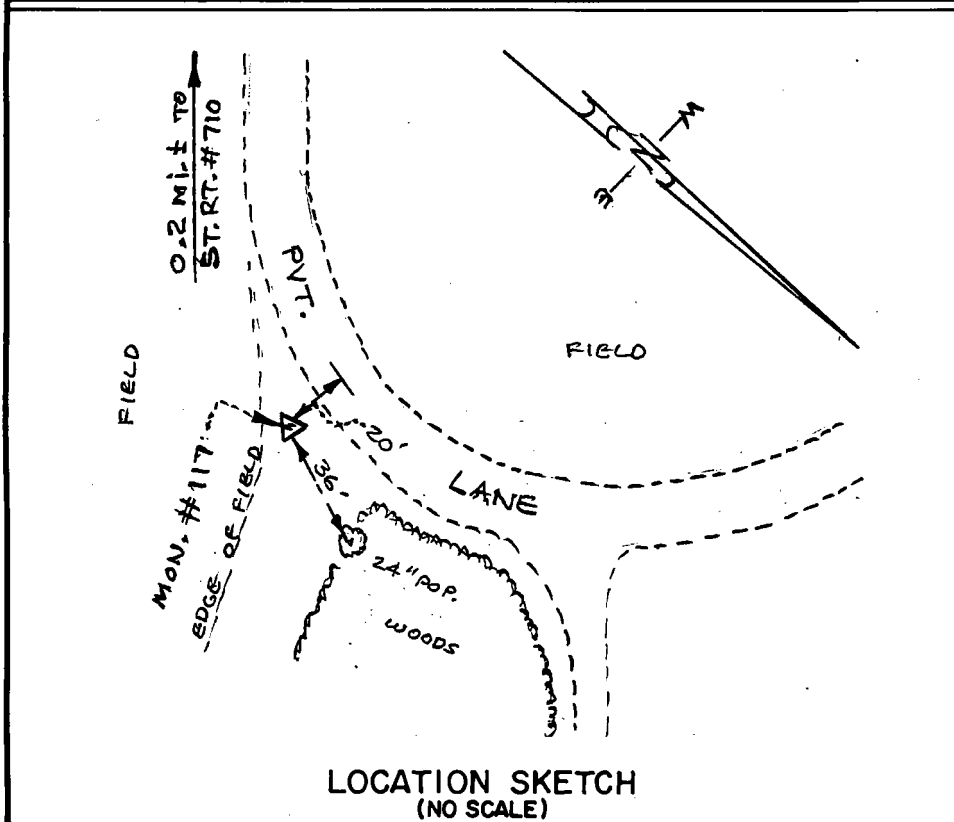
DISTRICT : PETSORTH

A 3-1/4" ALUMINUM DISK MONUMENT SET APPROXIMATELY FLUSH WITH THE GROUND STAMPED STATION NO. 117. TO REACH: FROM THE INTERSECTION OF STATE ROUTE 198 AND STATE ROUTE 710, GO ABOUT 0.7 MILE NORTHEAST ON STATE ROUTE 710 TO INTERSECTION OF STATE ROUTE 710 AND DIRT ROAD AT END OF STATE MAINTENANCE; GO ABOUT 0.2 MILE NORTHWEST ON DIRT ROAD TO MONUMENT SITE.

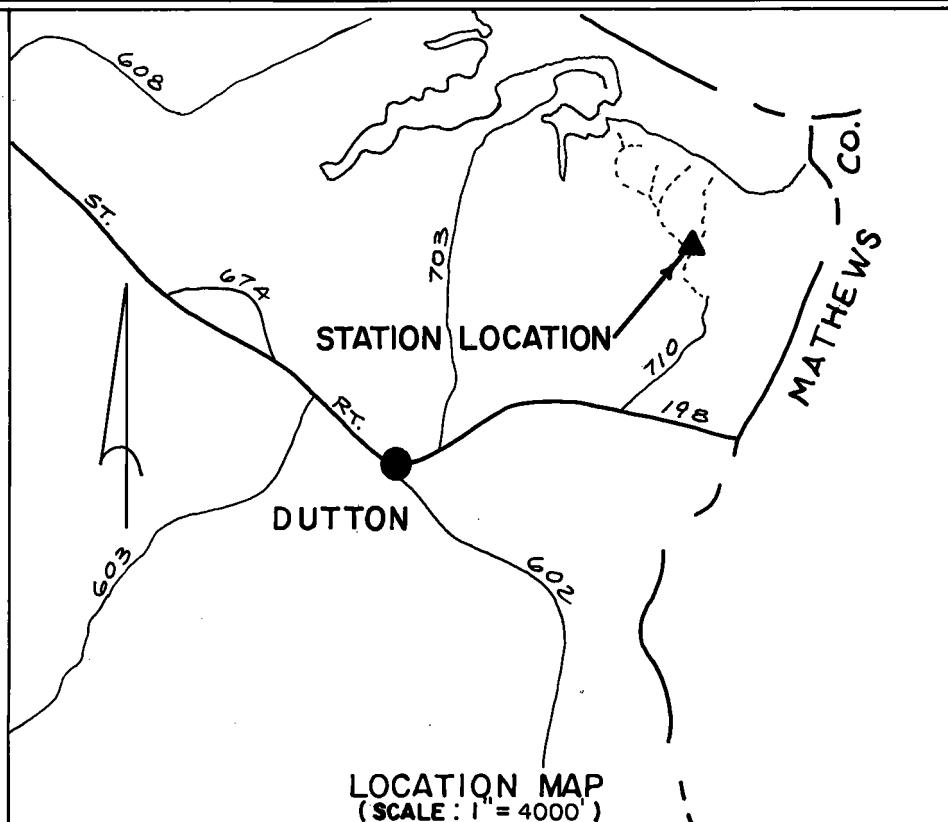
VERTICAL DATA :

REF. TO NATL. GEOD. VERT. DATUM (1988)

UNITS	STATION ELEVATION
METERS	11.01
U.S. SURVEY FT.	36.11



LOCATION SKETCH
(NO SCALE)



LOCATION MAP
(SCALE: 1" = 4000')

DATE: JANUARY, 1992

NOTE: USERS OF MONUMENTS LOCATED ON PRIVATE PROPERTY MUST OBTAIN LAND OWNERS PERMISSION BEFORE ENTERING



DAWSON & PHILLIPS, P.C.

CERTIFIED LAND SURVEYORS
(804) 693-2993