

GLOUCESTER COUNTY SURVEY MARK DATA SHEET

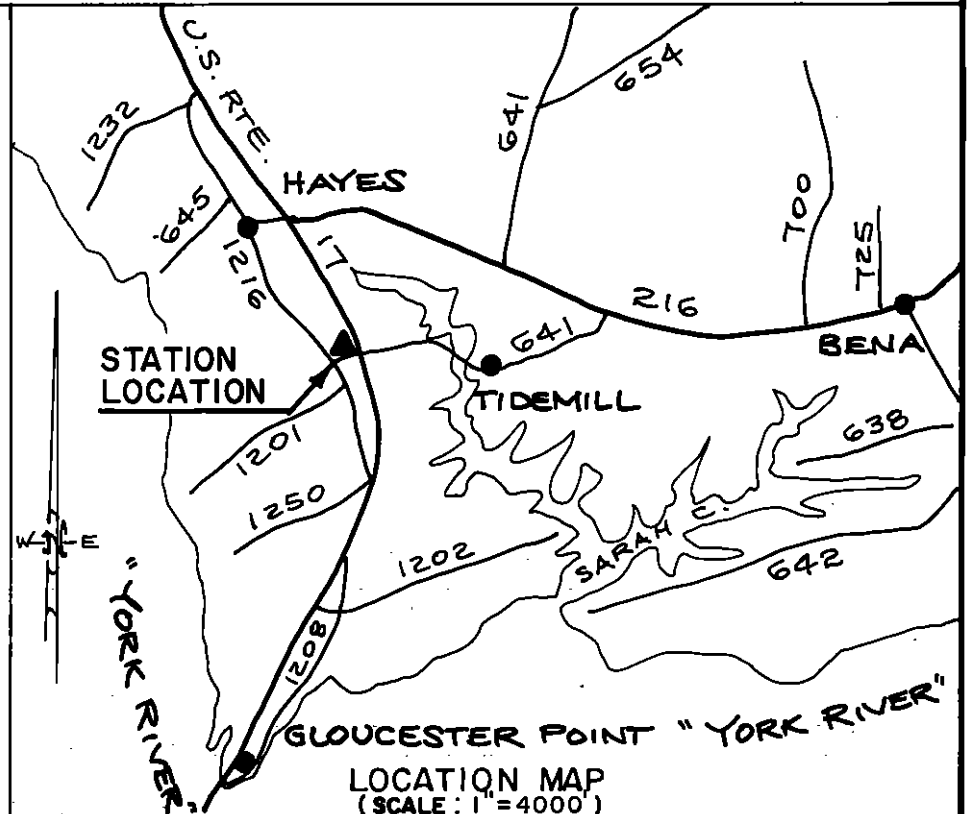
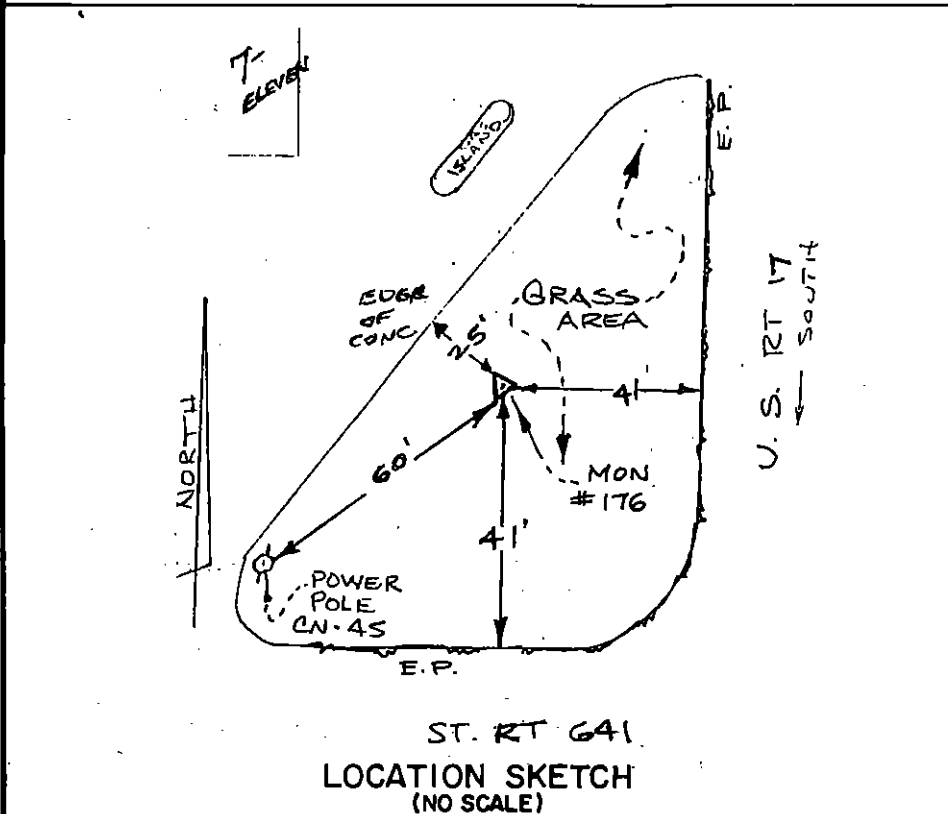
STATION NO.
176

| | | |
|--|-------------------|--------------|
| HORIZONTAL DATA : | | |
| VA. STATE PLANE COORD. - SOUTH ZONE (NAD 1983) | | |
| UNITS | EASTING (X) | NORTHING (Y) |
| METERS | 3677801.940 | 1105699.485 |
| U.S. SURVEY FT. | 1206625.198 | 3627615.777 |
| LATITUDE (DMS) | 37 16 7.63147 | |
| LONGITUDE (DMS) | 76 29 42.54721 | |
| SCALE FACTOR | 0.99994688 | |
| CONVERGENCE κ (DMS) | 1 13 0.45 | |
| VERTICAL DATA : | | |
| REF. TO NATL. GEOD. VERT. DATUM (1988) | | |
| UNITS | STATION ELEVATION | |
| METERS | 3.59 | |
| U.S. SURVEY FT. | 11.76 | |

STATION DESCRIPTION :

DISTRICT : GLOUCESTER POINT

A 3-1/4" ALUMINUM DISK MONUMENT SET APPROXIMATELY FLUSH WITH THE GROUND STAMPED STATION NO. 176. TO REACH: FROM THE INTERSECTION OF STATE ROUTE 1216 AND STATE ROUTE 1219 AT HAYES POST OFFICE, GO ABOUT 0.14 MILE EAST ON STATE ROUTE 1219 TO INTERSECTION WITH U. S. ROUTE 17; GO ABOUT 0.6 MILE SOUTH ON U. S. ROUTE 17 TO MONUMENT SITE AT INTERSECTION WITH STATE ROUTE 641; MONUMENT IS IN NORTHWEST CORNER OF INTERSECTION.



DATE: JANUARY, 1992

NOTE: USERS OF MONUMENTS LOCATED ON PRIVATE PROPERTY
MUST OBTAIN LAND OWNERS PERMISSION BEFORE ENTERING



DAWSON & PHILLIPS, P.C.
CERTIFIED LAND SURVEYORS
(804) 693-2993